



Come **"HOME"** to Kakatiya Nagar

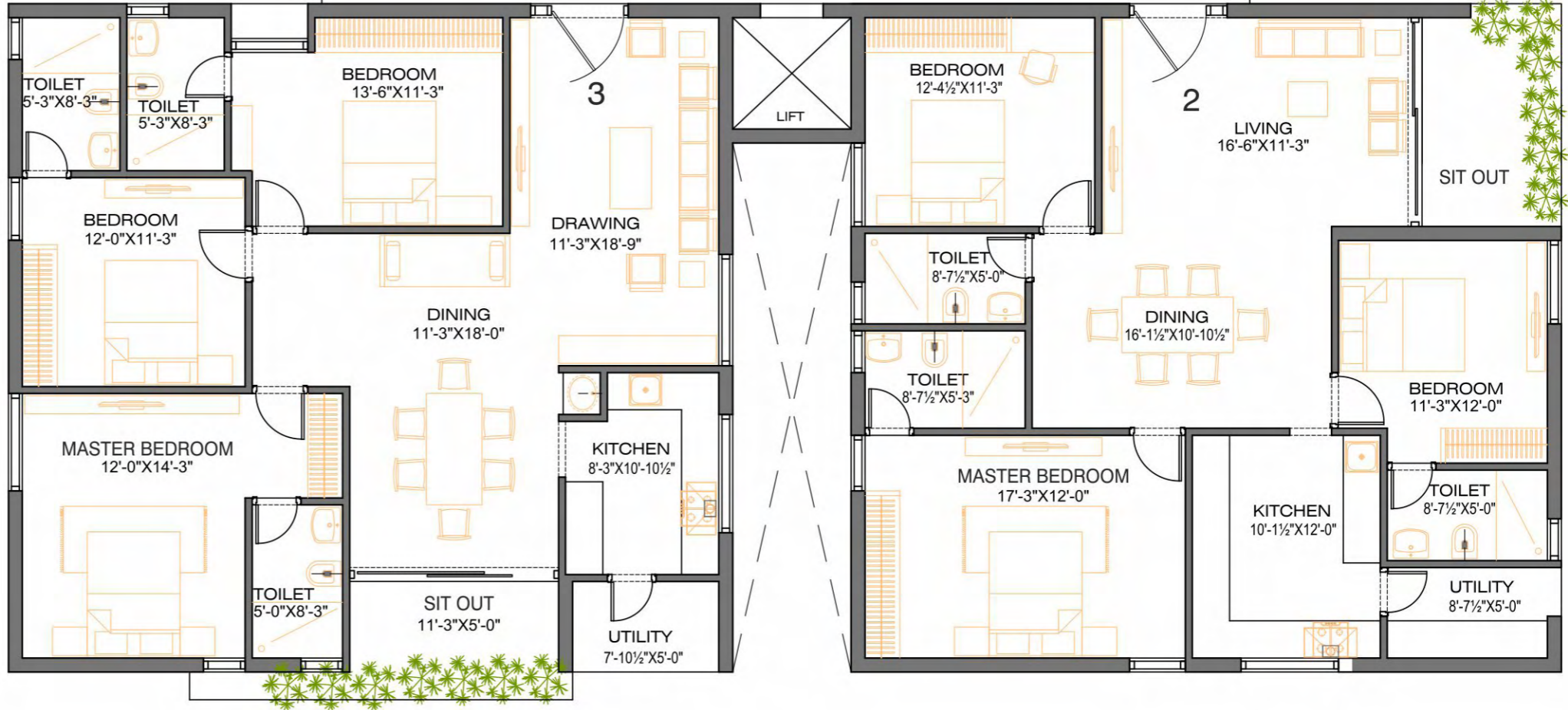
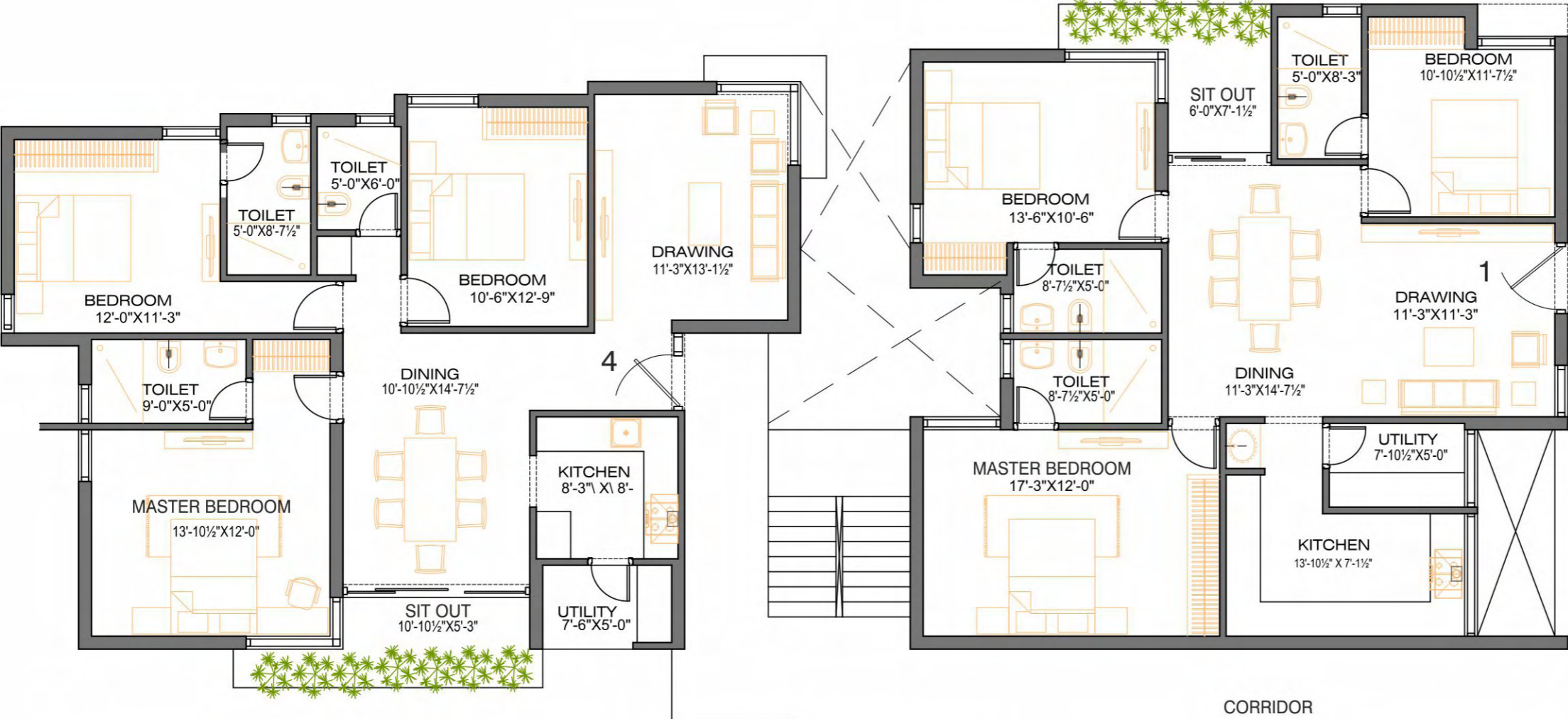


Manbhum | **KAKATIYA**

at HABSIGUDA, Hyderabad.



FLOOR PLAN



Flat No.	1	2	3	4
Sft.	1515	1630	1700	1500



SPECIFICATIONS

STRUCTURE

R.C.C. Framed structure with cement brick walls.

All the external walls of 8" thickness and internal wall of 4-1/2" thickness in 1:6 cement mortar with R.C.C. bed layer.

Wall Finishing (Internal)
Smooth lappam finish for complete flat.

WOOD WORK

All main door frames will be of 3'-6" x 7'-0" size with teak wood with frames of 5" x 3" in section and panel type shutter with one mortice lock, and necessary hardware fittings and fixtures.

All inner door frames teakwood with a frame section of 4"x 2-1/2" thick, with flush shutters. Internal door for bedrooms will be 3'-0" x 7'-0", toilets and

balconies will have 2'-6" x 7'-0".

WINDOWS

All windows will be of UPVC make sliding type with 4mm thick plain glass.

KITCHEN

Kitchen will have 2'-0" wide granite topped cooking platform, with stainless steel sink, over the cooking platform, the wall shall have 2'-0" height Ceramic tiled dadoing. Washing point in the Utility area with tap, drain and electrical point. Provision for Aqua guard fitting.

TOILETS

Ceramic flooring with matching 7'-0" high dado of glazed tiles, shall have European W/C commode, wash basin, shower, hot and cold water mixer, etc.

Water proofing with protective chemicals will be done for the toilets. The toilet flooring shall have 1-1/2" step down in the wet area. Sanitaryware from CERA, Hindware, Roca, Parryware, Nicer or any equivalent quality. Taps from Eses, Mark, Jaquar, Hindustan or equivalent quality.

WATER SUPPLY

Kitchen will have one Municipal Water Tap and one Borewell water tap connection. All the bathrooms will have borewell water supply. The borewell will be drilled and fitted with electrical pump. Water supply is through overhead water supply tank for drinking and usage.

ELECTRICAL

Each bedroom will be provided with 2 light points, one fan point and one 5- Amps plug and one foot lamp. Drawing

and dining rooms will be provided with 3 light points, 2 fan points and 2 nos. 15/5 Amps power plugs.

All the balconies will have one light point. Kitchens are provided with one light point and two 15-Amps power plug. One 5-Amp. power plug for Aqua guard connection. Separate electrical connection with 3-phase circuit for each flat will be provided, with common meter for all common light points, pumps, lift and other facility. Circuit breakers for each flat will be provided. Toilets are provided with one light point and one 15-Amps power plug for geyser.

TV & COMMUNICATION CABLES

TV cable (DTH) and telephone connectivity will be provided for hall/dining and intercom

telephone facility from apartment to apartment and security kiosk will be provided. All the bedrooms will have provision for Air-conditioners. The entire Electrification will be carried out as per I.S. Standards. All the power points at 650mm height from the flooring, except kitchen. The Cables will be of good quality from brands like Finolex, Anchor, RR, V-guard or equivalent.

PAINTING

The external walls shall have exterior Matt colouring and internal walls will have plastic emulsion colours from reputed manufacturers like Asian, Berger, Nerolac etc.,

FLOORING

Vitrified tile flooring of 24"X24" for entire flat.

LIFT

6 Passenger capacity lift from reputed manufacturers like Supriya, Johnson, Kone, Otis, Schindler, Richmen or equivalent.

GENERATOR

Standby Generator with acoustic enclosure, to energise all common areas, lifts, pumps and all the points within the flat. (except the air conditioners and geysers)

SWITCHES

Switches will be of good quality from brands like Toyoma, Northwest, Crabtree, Roma, Legrand or of equivalent quality

AMENITIES

Children's Play Area

LOCATION PLAN



Manbhum | KAKATIYA

at HABSIGUDA, Hyderabad.



Manbhum Construction Co. Pvt. Ltd

T : 040 6550 4748 | E : info@manbhum.com | W : www.manbhum.com